



Capturing the Spirit of American Railways, One Model at a Time

INTRODUCING **AML MODEL TRAINS**, WHERE CRAFTSMANSHIP MEETS PASSION, AND HISTORY COMES TO LIFE IN MINIATURE.

FROM THE ICONIC LOCOMOTIVES TO THE INTRICATE DETAILS OF EACH CAR, **AML** BRINGS THE GOLDEN AGE OF AMERICAN RAILWAYS TO YOUR FINGERTIPS. WITH A COMMITMENT TO AUTHENTICITY AND QUALITY, OUR MODELS CAPTURE THE SPIRIT OF THE RAILS, ALLOWING ENTHUSIASTS TO EMBARK ON JOURNEYS THROUGH TIME AND IMAGINATION.

WHETHER YOU'RE A SEASONED COLLECTOR OR JUST BEGINNING YOUR FASCINATION WITH MODEL TRAINS, **AML** OFFERS AN UNPARALLELED EXPERIENCE. EXPLORE OUR COLLECTION AND WITNESS THE MAGIC OF THE AMERICAN MAIN LINE UNFOLD BEFORE YOUR EYES. WELCOME TO A WORLD WHERE EVERY CURVE OF THE TRACK TELLS A STORY, AND EVERY WHISTLE HERALDS ADVENTURE. WELCOME TO **AML MODEL TRAINS**.

AMERICAN MAINLINE

1:29 SCALE, 45MM GAUGE

GP60	Page 4
GP60M	Page 6-7
PS-1 BOX CAR 8' 6-PANEL SUPERIOR DOOR	Page 8-9
PS-1 BOX CAR 8' YOUNGSTOWN DOOR	Page 10
PS-1 BOX CAR 7' DOUBLE DOOR	Page 11
STOCK CAR	Page 12-13
40' WOOD SIDE REEFER REBUILT	Page 14-15
BETHGON II COAL PORTER	Page 16-17
PS-2 4750 CU. FT. 3-BAY COVERED HOPPER	Page 18-19
GUNDERSON 50' HI-CUBE BOX CAR	Page 20-21
FLEX TRACK	Page 22
CURVE TRACK	Page 23
SWITCH	Page 24
ACCESSORIES	Page 25
NOTES	Page 26

GP60

LOCOMOTIVE



SPECIFICATIONS

Scale/Gauge:	1:29 Scale/45mm Gauge
Length:	670mm
Width:	121mm
Height:	168mm
Minimum Radius:	1.2M (48")

FEATURES

- Plastic Construction
- Die-cast Sprung Trucks
- Metal Wheels
- Working Knuckle Couplers
- Operating Doors

AML - The EMD GP60 is a model of 4-axle (B-B) diesel-electric locomotive built by General Motors Electro-Motive Division between 1985 and 1994.[1] The GP60 was EMD's first engine that was classified as a "third-generation" locomotive. Power was provided by a 16-cylinder 710G3A diesel engine, which could produce 3,800 horsepower (2,800 kW). This locomotive was 59 feet 9 inches long and featured a 3,700-US-gallon (14,000 L) fuel tank.

The GP60 series shared the same frame as the GP59. Cabless 'B' units of this locomotive model were also built; they were known as GP60B models. Units built with a North American Safety Cab were designated GP60M. These latter two types were purchased exclusively by the Atchison, Topeka and Santa Fe Railway. A total of 294 GP60, 23 GP60B and 63 GP60M units were built by EMD. Due to the mainstream focus of railroads on powerful six-axle units, and strict emissions standards, aside from the collaborations with Motive Power Incorporated, the GP60 is the last new EMD "Geep".

AML 1:29 scale GP60 locomotive is a detailed, large-scale model of the EMD GP60 diesel-

electric locomotive. This model is crafted by Accucraft, a manufacturer known for producing high-quality, scale-accurate model trains.

High-quality detailing includes realistic body shapes, accurate paint schemes, and detailed components like handrails, steps, grilles, and fans. The locomotive is powered by two robust motors designed for smooth, reliable operation on large-scale layouts. It includes all-wheel drive to enhance traction and performance.

The model includes working headlights, ditch lights, and other lighting features, with provisions for sound systems that can produce realistic diesel engine sounds, horn, and bell effects.

This model is designed to be Digital Command Control (DCC) equipped, offering advanced control options for multiple trains, realistic sound, and smooth throttle response.

GP60

LOCOMOTIVE



G801-RG/BO Rio Grande



G801-NS/GG Norfolk Southern "Southern Railway"



G801-VR/RW Vermont Railway



G801-UP/YG Union Pacific



G801-CSX/B CSX



G801-NS/OL Norfolk Southern "Operation Lifesaver"



G801-NS/BW Norfolk Southern



G801-SF/BY Santa Fe

GP60M

LOCOMOTIVE



GP60M-SF GP60M SANTA FE, ALUMINUM/RED (#100, #101, #144, #157)

AML 1:29 scale GP60M locomotive is a detailed, large-scale model of the EMD GP60M diesel-electric locomotive, commonly seen on American railroads. This model is crafted by Accucraft, a manufacturer known for producing high-quality, scale-accurate model trains. The 1:29 scale offers a larger and more imposing presence on garden or outdoor railways.

The model is built from durable materials, featuring die-cast or metal components, with precise detailing to replicate the appearance of the real GP60M locomotive.

High-quality detailing includes realistic body shapes, accurate paint schemes, and detailed components like handrails, steps, grills, and fans. The model replicates the GP60M's distinct wide cab and nose, which was a unique feature of the prototype units ordered by Santa Fe.

The locomotive is powered by a robust motor designed for smooth, reliable operation on

large-scale layouts. It includes all-wheel drive to enhance traction and performance, especially on outdoor tracks with varying conditions.

The model includes working headlights, ditch lights, and other lighting features, with provisions for sound systems that can produce realistic diesel engine sounds, horn, and bell effects.

This model is designed to be Digital Command Control (DCC) equipped, offering advanced control options for multiple trains, realistic sound, and smooth throttle response.

The Accucraft AML 1:29 scale GP60M is appreciated by model train enthusiasts for its high level of craftsmanship, accurate detailing, and suitability for larger-scale garden railroads, delivering both visual appeal and operational performance.

GP60M

LOCOMOTIVE



GP60M-BNSFh BNSF 'HERITAGE', GREEN/ORANGE (#117, #145)



GP60M-BNSFw BNSF 'WEDGE' LOGO, BLACK/ORANGE (#130, #150)

SPECIFICATIONS

Scale/Gauge:	1:29 Scale/45mm Gauge
Length:	670mm
Width:	121mm
Height:	168mm
Minimum Radius:	1.2M (48")

FEATURES

- Plastic Construction
- Die-cast Sprung Trucks
- Metal Wheels
- Working Knuckle Couplers
- Operating Doors

PS-1 BOX CAR 8' 6 PANEL SUPERIOR DOOR

ROLLING STOCK



G401-BO Baltimore & Ohio (#470672, #470695, #470718, #470733)

AML - The PS-1 boxcar with an 8-foot 6-panel Superior door is another variation of the standard PS-1 series produced by Pullman-Standard. This variation featured a different door design, catering to specific loading and unloading needs in the freight industry.

Introduction and Features

The PS-1 series, introduced in 1947, was known for its welded steel construction and standardized design. These boxcars were built to last, offering railroads a durable and versatile option for transporting various goods. While many PS-1 boxcars featured Youngstown doors, the Superior door was another popular option.

The 8-foot 6-panel Superior door was designed and manufactured by the Superior Door Company. It had a unique construction featuring six vertical panels, which gave the door increased strength and rigidity. This design was particularly useful for railroads that needed a door capable of withstanding rough handling and heavy use. The 8-foot width of the door allowed easy access for loading and unloading freight, making it suitable for a wide range of cargo types, from bulk materials to packaged goods.

Popularity and Usage

The Superior door was a popular choice among railroads looking for a more robust and durable door option. Its design helped protect the cargo from damage during transit and provided secure closure, reducing the risk of theft or loss of goods. The 8-foot 6-panel configuration was particularly favored for its balance of accessibility and strength.

Throughout the 1950s and 1960s, PS-1 boxcars with Superior doors could be seen on railroads across North America. They were commonly used to transport a wide variety of goods, including machinery, building materials, agricultural products, and consumer goods. The boxcar's flexibility and the door's durability made it a valuable asset to railroad companies during this era.

Today, PS-1 boxcars with Superior doors are considered historical artifacts, showcasing the evolution of freight car design in the mid-20th century. They can often be found in railroad museums and private collections, appreciated for their role in shaping the freight rail industry. The PS-1's influence is still felt in modern railcar design, as many of the principles of durability and functionality continue to be important in today's rail industry.

SPECIFICATIONS

Scale/Gauge:	1:29 Scale/45mm Gauge
Length:	479mm
Width:	120mm
Height:	166mm
Minimum Radius:	1.2M (48")

FEATURES

Plastic Construction
Die-cast Sprung Trucks
Metal Wheels
Working Knuckle Couplers
Operating Doors

ORDER INFO

G401-CB	Cotton Belt, A)35588 B)35653 C)35697 D)35813, Unit
G401-BO	B&O, A)470673 B)470697 C)470721 D)470734, Unit
G401-BM	BM, A)76036 B)76087 C)76122 D)76158, Unit
G401-NYC	NYC, A)170055 B)170097 C)170125 D)170144, Unit
G401-PEN	Pennsylvania, A)47003 B)47008 C)47011 D)47019, Unit
G401-ICG	Illinois Central Gulf, A)404359 B)404461 C)404572 D)404578, Unit
G401-EJE	EJ&E A)61025 B)61039 C)61267 D)61278, Unit
G401-DRGW	D&RGW Flying Rio Grande, A)50233 B)50247 C)50479 D)50486, Unit
G401-SF	SANTA FE - Chief, Grand Canyon Line, The Scout, Super Chief w/ Map, A)31250 B)31257 C)31401 D)31698, Unit
G401-WF/SO	Western Pacific Silver w/ Orange Feather, A)19503 B)19510 C)19512 D)19515, Unit

PS-1 BOX CAR 8' 6 PANEL SUPERIOR DOOR

ROLLING STOCK



G401-NYC NYC Pacemaker (#170053, #170087, #170129, #170140)



G401-BM BM (#76035, #76082, #76119, #76154)

PS-1 BOX CAR 8' YOUNGSTOWN DOOR

ROLLING STOCK



G402-Fr FRISCO (#17402, #17439, #17465, #17489)

AML - The PS-1 boxcar, introduced by Pullman-Standard in 1947, represented a significant innovation in freight car design. The PS-1 series was developed as a standardized boxcar with a welded steel body, which marked a departure from the riveted designs commonly used before its introduction. This design offered improved durability, strength, and a more streamlined manufacturing process.

Introduction and Evolution

Pullman-Standard's PS-1 boxcars quickly became a favorite among North American railroads for their reliability and versatility. The cars were designed with a capacity of 40 to 50 tons and came in various lengths, with the 40-foot models being the most common. Over the years, several door configurations were offered, but the 8-foot Youngstown door became particularly popular.

8-Foot Youngstown Door

The 8-foot Youngstown sliding door, produced by the Youngstown Steel Door Company, was known for its sturdy construction and functionality. The 8-foot width was a strategic choice to accommodate a wide range of freight, facilitating the loading and unloading of bulky goods like machinery, lumber, and consumer goods. The door's robust design made it ideal for the heavy usage that boxcars typically endured.

Impact and Usage

The PS-1 boxcars, particularly those with the 8-foot Youngstown doors, were widely adopted across many railroads throughout the 1950s and 1960s. They became a workhorse of the rail industry, used for hauling a diverse range of goods. Their standard design and dimensions made them a versatile choice for many types of freight, from packaged goods to raw materials.



G402-DH D&H (#20016, #20025, #20047, #20076)



G402-NW/K NORFOLK & WESTERN (#42723, #42745, #42778, #42797)



G402-NW/R NORFOLK & WESTERN (#42810, #42815, #42823, #42833)



G402-VG VIRGINIAN (#63137, #63142, #63162, #63175)

PS-1 BOX CAR 7 FT. DOUBLE DOOR

ROLLING STOCK



G403-CB COTTON BELT (#46001, #46025, #46160, #46199)



G403-ATSF ATSF, ALL THE WAY (#17584, #17548, #17619, #17663)



G403-BN BURLINGTON NORTHERN (#198746, #198747, #198963, #198964)



G403-UP UNION PACIFIC (#176001, #176125, #176319, #176430)



G403-GN GREAT NORTHERN (#3501, #3522, #3878, #3918)



G403-SP SOUTHERN PACIFIC (#66181, #66226, #66354, #66476)



G403-NP NORTHERN PACIFIC (#38001, #38007, #38702, #38800)



G403-CN CANADIAN NATIONAL (#587156, #587188, #587230, #587337)



G403-CP CANADIAN PACIFIC (#296646, #296665, #296689, #296704)

STOCK CAR

ROLLING STOCK



AML - 40' Woodside Reefer (refrigerator car) in 1:29 scale is a meticulously detailed miniature replica of the original railroad car used to transport perishable goods.

At 1:29 scale, the model is approximately 16.55 inches (42 cm) long, which is a precise scaled-down representation of the original 40-foot wooden reefer. The body is constructed to resemble wood panels, with vertical wood siding. The planking is detailed to show individual boards, seams, and rivets, giving the model an authentic, aged appearance. The color scheme is the signature colors of the railroad company that owned it, featuring a combination of neutral tones such as tan, yellow, or gray with bold company logos or branding.

The car features working doors on either side, crafted to look like wooden doors with visible metal hinges and latches.

The roof is represented as a slightly arched wooden panel design, with fine details showing roof seams and fastening hardware. The roof includes hatches or vents for cooling.

Beneath the car, the underframe displays an array of brake equipment, including brake hoses, air tanks, and rods, all modeled with attention to fine detail. The trucks are sprung for realistic movement and feature separately modeled springs, journals, and axle boxes.

The sides feature crisp, clear lettering and logos that replicate the prototype's design, including company names, car numbers, capacity data, and other operational details. These are be scaled correctly and applied using decals or printed directly onto the model. The model boasts fine details such as accurate rivets, decals, and paint schemes that are true to the real freight car used on American railroads.

The model includes operational features such as functional couplers, enhancing realism for model railroad operations. This model is highly valued for its accuracy in replicating the appearance and functionality of real-world coal gondolas used in modern freight railroads.

SPECIFICATIONS

Scale/Gauge:	1:29 Scale/45mm Gauge
Length:	420mm
Width:	120mm
Height:	165mm
Minimum Radius:	1.2M (48")

FEATURES

Plastic Construction
Die-cast Sprung Trucks
Metal Wheels
Working Knuckle Couplers
Operating Doors

STOCK CAR

ROLLING STOCK



G424-ATSF/Br ATSF (#27054, #27070, #27089, #27099)



G424-DRGW D&RGW BLACK (#39000, #39010, #39099, #39431)



G424-CN CANADIAN NATIONAL (#172755, #172767, #172772, #172785)



G424-GN/R GREAT NORTHERN (#55750, #55892, #55931, #56087)



G424-UP/Br UNION PACIFIC (#47564, #47576, #47596, #47598)



G424-WP WESTERN PACIFIC (#75707, #75715, #75725, #75736)



G424-CP CANADIAN PACIFIC (#277521, #277624, #277681, #277807)



G424-SP SOUTHERN PACIFIC (#74345, #74376, #74387, #74398)



G424-01A DATA ONLY BOX CAR BROWN

40' WOODSIDE REEFER REBUILT

ROLLING STOCK



AML - 40' Woodside Reefer (refrigerator car) in 1:29 scale is a meticulously detailed miniature replica of the original railroad car used to transport perishable goods.

At 1:29 scale, the model is a precise scaled-down representation of the original 40-foot wooden reefer. The body is constructed to resemble wood panels, with vertical wood siding. The planking is detailed to show individual boards, seams, and rivets, giving the model an authentic, aged appearance. The color scheme is the signature colors of the railroad company that owned it, featuring a combination of neutral tones such as tan, yellow, or gray with bold company logos or branding.

The car features working doors on either side, crafted to look like wooden doors with visible metal hinges and latches.

The roof is represented as a slightly arched wooden panel design, with fine details showing roof seams and fastening hardware. The roof includes hatches or vents for cooling.

Beneath the car, the underframe displays an array of brake equipment, including brake hoses, air tanks, and rods, all modeled with attention to fine detail. The trucks are sprung for realistic movement and feature separately modeled springs, journals, and axle boxes.

The sides feature crisp, clear lettering and logos that replicate the prototype's design, including company names, car numbers, capacity data, and other operational details. These are be scaled correctly and applied using decals or printed directly onto the model. The model boasts fine details such as accurate rivets, decals, and paint schemes that are true to the real reefer used on American railroads.

The model includes operational features such as removable loads, functional couplers, enhancing realism for model railroad operations. This model is highly valued for its accuracy in replicating the appearance and functionality of real-world coal gondolas used in modern freight railroads.

SPECIFICATIONS

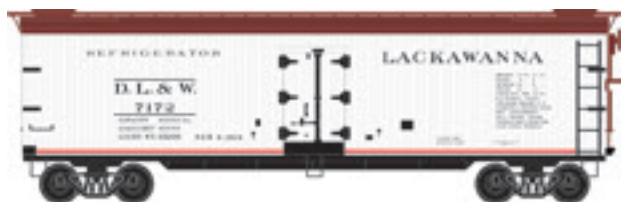
Scale/Gauge:	1:29 Scale/45mm Gauge
Length:	480mm
Width:	120mm
Height:	165mm
Minimum Radius:	1.2M (48")

FEATURES

Plastic Construction
Die-cast Sprung Trucks
Metal Wheels
Working Knuckle Couplers
Operating Doors

40' WOODSIDE REEFER REBUILT

ROLLING STOCK



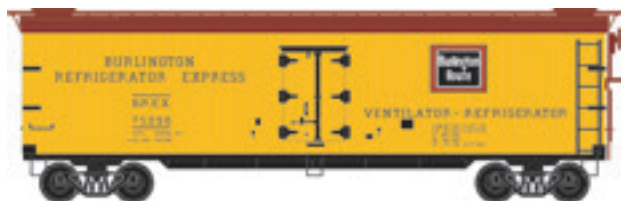
G426-LKW LACKAWANNA (#7122, #7110, #7094, #7067)



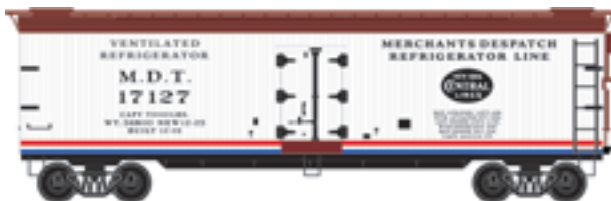
G426-SF SANTA FE (#16782, #17644, #17658, #17939)



G426-BD BANANA DIST CO. (#7079, #7060, #7055, #7034)



G426-BLT BURLINGTON (#75296, #75282, #75243, #75357)



G426-MD/NYC MERCHANT'S DESPATCH (#17127, #17139, #20651, #20629)



G426-CN CANADIAN NATIONAL (#207000, #207322, #207210, #207050)



G426-CP CANADIAN PACIFIC (#288500, #288512, #288900, #288810)



G426-PFE/UP PFE UP/SP (#92018, #92387, #93954, #94127)



G426-PFE/WP PFE WESTERN PACIFIC (#51927, #51930, #52303, #52337)



G426-01A DATA ONLY PFE YELLOW

BETHGON II COAL PORTER

ROLLING STOCK



AML - The Coalporter was developed by Bethlehem Steel Car in 1978, in an effort to create a higher-capacity, more efficient coal car.

The aluminum BethGon® II with its patented twin-tubs is the industry-leading coal gondola car. FreightCar America's "continuous improvement" has kept this car in the fore front as the most recognized coal gondola in the industry. Having delivered over 70,000 cars, it is the best selling railcar ever produced by FreightCar America. Since the original BethGon was introduced in 1978, it has a demonstrated track record of reliability and performance over millions of service miles.

Today's aluminum BethGon II with a lightweight of 41,700 lbs has a carrying capacity of 244,330 lbs and a volume of 4,911 cubic feet.

SPECIFICATIONS

Scale/Gauge:	1:29 Scale/45mm Gauge
Length:	590mm
Width:	116mm
Height:	143mm
Minimum Radius:	1.2M (48")

AML Bethgon cars are constructed from high-quality materials such as metal and durable plastics, ensuring both durability and a realistic appearance. The Bethgon Porter features the distinctive open-top design of a coal gondola, with smooth sides and detailed undercarriage, including brake systems, couplers, and trucks.

The model boasts fine details such as accurate rivets, decals, and paint schemes that are true to the real coal gondolas used on American railroads.

The model includes operational features such as removable loads, functional couplers, enhancing realism for model railroad operations. This model is highly valued for its accuracy in replicating the appearance and functionality of real-world coal gondolas used in modern freight railroads.

FEATURES

- Plastic Construction
- Die-cast Sprung Trucks
- Metal Wheels
- Working Knuckle Couplers
- Operating Doors



G421-00 Silver, No Data



G421-01 BNSF Silver/Black (668350, 668353, 668368, 668384)



G421-02 BNSF Silver/Brown (668519, 668524, 68532, 668534)



G421-NS NS Silver (10168, 10179, 10180, 10182)

BETHGON II COAL PORTER

ROLLING STOCK



G421-05 CSX Silver/Yellow (379783, 379775, 379782, 379791)



G421-04 UP/CMO 'Building America' Silver/Yellow (288133, 288154, 288158, 288167)



G421-CNRL Conrail (507703, 507722, 507728, 507750)



G421-06 BN Silver/Yellow



G421-CNA CNA (193663, 193665, 193712, 193803)



G421-WP Wisconsin Power (2814, 2815, 2827, 2847)



G421-KC Kansas City Power & Light (795014, 795123, 795300, 795307)



G421-BNSFs Silver w/Swoosh Logo (670501, 670603, 670790, 670797)



G421-DRGW D&RGW (57000, 57262, 58431, 59999)



G421-CSXBK CSX Black (388257, 388276, 388301, 388410)



G421-NI Northern Indiana Public Service (2362, 2443, 2575, 2637)

PS-2 4750 CU. FT. 3-BAY COVERED HOPPER

ROLLING STOCK



AML - The Coalporter was developed by Bethlehem Steel Car in 1978, in an effort to create a higher-capacity, more efficient coal car.

The aluminum BethGon® II with its patented twin-tubs is the industry-leading coal gondola car. FreightCar America's "continuous improvement" has kept this car in the fore front as the most recognized coal gondola in the industry. Having delivered over 70,000 cars, it is the best selling railcar ever produced by FreightCar America. Since the original BethGon was introduced in 1978, it has a demonstrated track record of reliability and performance

over millions of service miles.

Today's aluminum BethGon II with a lightweight of 41,700 lbs has a carrying capacity of 244,330 lbs and a volume of 4,911 cubic feet.

SPECIFICATIONS

Scale/Gauge: 1:29 Scale/45mm Gauge
Length: 638mm
Width: 109mm
Height: 162mm
Minimum Radius: 1.2M (48")

FEATURES

Plastic Construction
Die-cast Sprung Trucks
Metal Wheels
Working Knuckle Couplers
Operating Doors



G431-01 Silver, No Data



G431-CSX Chessie Seaboard Consolidated (#259402, #259700, #260344, #260420)



G431-NW Norfolk & Western (#177267, #177499, #177544, #177638)



G431-CN Canadian National (#765314, #765878, #767651, #767725)



G431-GWS Golden West Service (521001, 521003, 5210005, 521008)



AMERICAN MAINLINE (A DIVISION OF ACCUCRAFT TRAINS)
33260 CENTRAL AVE, UNION CITY, CA 94587, USA TEL: 1.510.324.3399
www.americanmainline.com

PS-2 4750 CU. FT. 3-BAY COVERED HOPPER

ROLLING STOCK



G431-BN Burlington Northern (448841, 448913, 449069, 449515)



G431-UP Union Pacific (87575, 88277, 87814, 88088)



G431-CNRL CONRAIL (890532, 890556, 890647, 890661)



G431-ATSF Atchison, Topeka and Santa Fe (315319, 315498, 315502, 315697)



G431-D&RGW Denver and Rio Grande Western (10860, 10867, 10947, 10971)



G431-BNSF Burlington Northern Santa Fe (466357, 466649, 470189, 470314)



G431-CNW Chicago and North Western (178222, 178239, 178416, 178511)



G431-IC Illinois Central Orange with black bottom



G431-MKT (4150, 4231, 4265, 4313)



G431-CH Chessie



G431-MR Milwaukee Road (100321, 100490, 100687, 100620)



G431-CP Canadian Pacific (75738, 75122, 75141, 75167)

GUNDERSON 50' HI-CUBE BOX CAR

ROLLING STOCK



G431-TTX TTX, Yellow (#501340, #501471, #501521, #501595)

AML - The Gunderson 50' hi-cube box car is a specialized freight railcar engineered for the efficient transport of large, high-volume cargo. Measuring 50 feet in length, this box car boasts an increased interior height, commonly referred to as a "hi-cube" design, which provides significantly more vertical space compared to standard boxcars. This additional height makes it ideal for shipping goods that are bulky or require more vertical clearance, such as appliances, electronics, and automotive components.

The car's construction features smooth sides to optimize loading capacity and minimize potential damage to the

cargo. It is typically equipped with sliding or plug doors, allowing for easy access during loading and unloading operations. The reinforced interiors can handle a wide range of freight securely, including palletized goods and crated items. Despite its larger dimensions, the Gunderson 50' hi-cube box car is designed to be compatible with standard rail network specifications, ensuring seamless integration into various rail transport scenarios. Its versatile design makes it a popular choice for industries that require the transportation of large, lightweight cargo with high efficiency.

SPECIFICATIONS

Scale/Gauge:	1:29 Scale/45mm Gauge
Length:	604mm
Width:	112mm
Height:	182mm
Minimum Radius:	1.2M (48")

FEATURES

Plastic Construction
Die-cast Sprung Trucks
Metal Wheels
Working Knuckle Couplers
Operating Doors



G431-NS Norfolk Southern (#456563, #456631, #456692, #456777)



G431-CSX CSX "Big Blue" (#151213, #151274, #151358, #151403)



G431-SP Southern Pacific (#226941, #227181, #227244, #227310)

GUNDERSON 50' HI-CUBE BOX CAR

ROLLING STOCK



G411-BN Burlington Northern (#287054, #287092, #287181, #287271)



G411-UP/Br Union Pacific (#405009, #405021, #405097, #405122)



G411-CN/Br Canadian National (#406888, #406893, #406895, #406896)



G411-CP Canadian Pacific (#215033, #215037, #215041, #215047)



G411-WC Wisconsin Central (#21515, #21524, #21547, #21568)



G411-BNSF/Br BNSF Railway (#726499, #726551, #726584, #726600)



G411-CNW Chicago & North Western (#520053, #520081, #520094, #520131)



G411-IC Illinois Central (#533038, #533043, #533055, #533066)



G411-IBT International Bridge & Terminal (#19101, #19134, #19255, #19341)



G411-SCC Stone Container Corp (#1015, #1028, #1035, #1042)



G411-UP/Y Union Pacific (#5174985 #517528 #517566 #517713)



G411-DRGW D&RGW (#62008 #62014 #62033 #62053)



G411-CB Cotton Belt (#59011 #59244 #59302 #59384)



G411-SF Santa Fe (#46015, #46029, #46031, #46069)



G411-GWS Golden West Service (#464748 #464791 #464812 #464900)

FLEX TRACK

TRACK

Solid rails with UV resistant authentic looking railroad ties. Designed for indoor and outdoor use.



RAIL

45 mm 332 Brass

TKRB-35.1	5 ft. Brass Rail, 1 pc
TKRB-35.20	5 ft. Brass Rail, 20 pcs
TKRB-33.1	3 ft. Brass Rail, 1 pc
TKRB-33.20	3 ft. Brass Rail, 20 pcs
TKRB-310.20	10 ft. Brass Rail, 20 pcs



RAIL

45 mm 332 Brass AL

TKRA-35.1	5 ft. Aluminum Rail, 1 pc
TKRA-35.20	5 ft. Aluminum, 20 pcs
TKRA-33.1	3 ft. Aluminum, 1 pc
TKRA-33.20	3 ft. Aluminum, 20 pcs
TKRA-310.20	10 ft. Aluminum, 20 pcs



BRASS TRACK, NARROW GAUGE

45 mm 332 Brass

TKBN-35.6	5 ft. Brass Narrow Gauge Track, 6 pcs
TKBN-33.6	3 ft. Brass Narrow Gauge Track, 6 pcs
TKRB-32.1	2 ft. Brass Narrow Gauge Track, 1 pc
TKRB-31.1	1 ft. Brass Narrow Gauge Track, 1 pc



BRASS TRACK, NARROW GAUGE

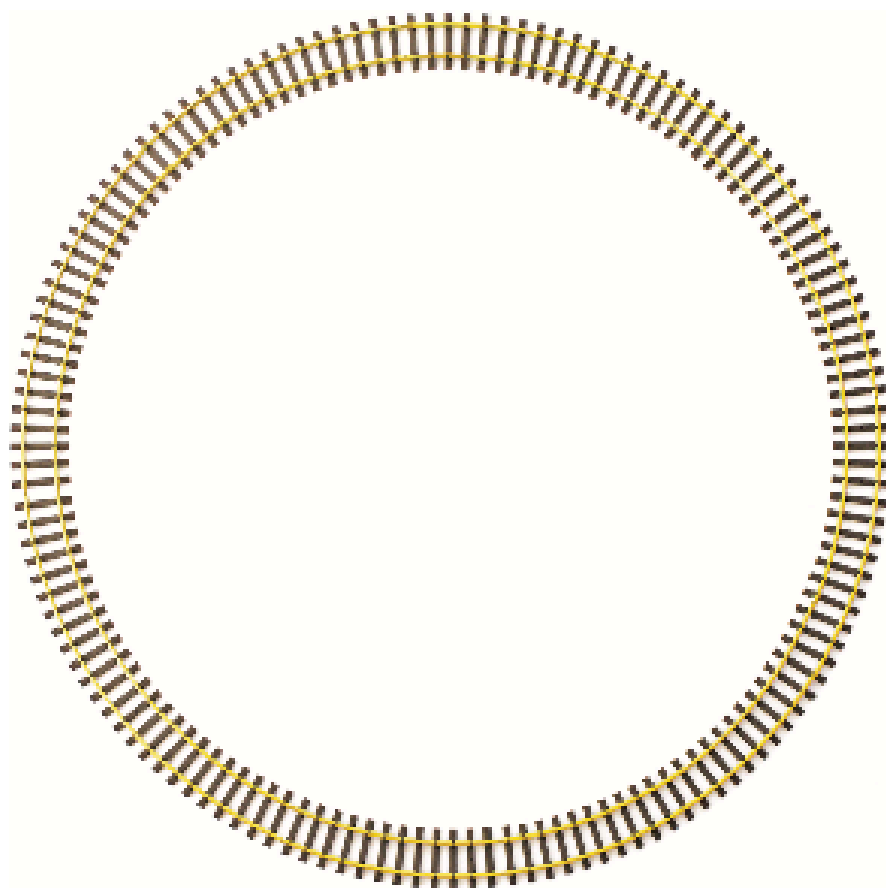
45 mm 332 AL

TKAN-35.6	5 ft. Aluminum Narrow Gauge Track, 6 pcs
TKAN-33.6	3 ft. Aluminum Narrow Gauge Track, 6 pcs
TKAB-32.1	2 ft. Aluminum Narrow Gauge Track, 1 pc
TKAB-31.1	1 ft. Aluminum Narrow Gauge Track, 1 pc

CURVE TRACK

TRACK

Code 332, 45mm Gauge, Full circle,
Solid rails with UV resistant authentic looking primed ties, Designed for indoor and outdoor use,



BRASS, EURO STYLE

BRASS, EURO STYLE

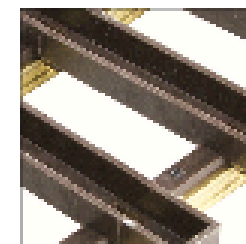
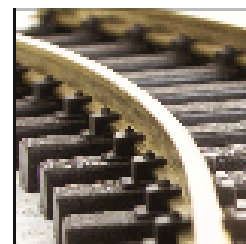


6213-04	4 ft. Dia. Curve, Brass, Euro Style, 12 pcs
6213-05	5 ft. Dia. Curve, Brass, Euro Style, 12 pcs
6213-06	6 1/2 ft. Dia. Curve, Brass, Euro Style, 12 pcs
6213-09	8 ft. Dia. Curve, Brass, Euro Style, 16 pcs
6213-08	8 ft. Dia. Curve, Brass, Euro Style, 12 pcs
6213-10	10 ft. Dia. Curve, Brass, Euro Style, 12 pcs
6213-11	11 1/2 ft. Dia. Curve, Brass, Euro Style, 16 pcs
6213-12	12 1/2 ft. Dia. Curve, Brass, Euro Style, 16 pcs
6213-15	15 ft. Dia. Curve, Brass, Euro Style, 16 pcs
6213-16	16 1/2 ft. Dia. Curve, Brass, Euro Style, 16 pcs
6213-20	20 ft. Dia. Curve, Brass, Euro Style, 16 pcs

ALUMINUM, EURO STYLE



6240-07	4 ft. Dia. Curve, AL, Euro Style, 12 pcs
6240-08	5 ft. Dia. Curve, AL, Euro Style, 12 pcs
6240-10	6 1/2 ft. Dia. Curve, AL, Euro Style, 12 pcs



SWITCHES

TRACK

SWITCH CODE 332

Code 332, 45mm Gauge,
Solid rails with UV resistant authentic looking railroad ties. Designed for indoor and outdoor use.
Switches are with insulated frog, Micro switch box, Manually operated brass switch stand



BRASS, USA STYLE

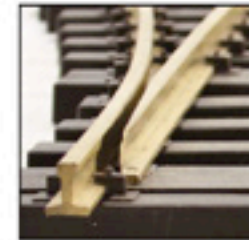
45 332 Brass

G217-OL #6 Switch Manual Left, Brass, USA Style
G217-OR #6 Switch Manual Right, Brass, USA Style
G217-8L 8 ft. Switch Manual Left, Brass, USA Style
G217-8R 8 ft. Switch Manual Right, Brass, USA Style

STAINLESS STEEL, USA STYLE

45 332 SS

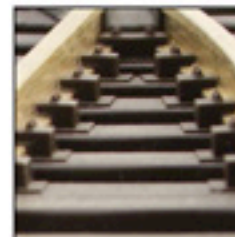
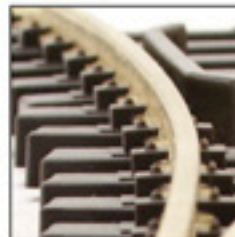
G257-OL #6 Switch Manual Left, SS, USA Style
G257-OR #6 Switch Manual Right, SS, USA Style
G257-8L 8 ft. Switch Manual Left, SS, USA Style
G257-8R 8 ft. Switch Manual Right, SS, USA Style



BRASS, EURO STYLE

45 332 Brass

G218-OL #6 Switch Manual Left, Brass, Euro Style
G218-OR #6 Switch Manual Right, Brass, Euro Style
G218-8L 8 ft. Switch Manual Left, Brass, Euro Style
G218-8R 8 ft. Switch Manual Right, Brass, Euro Style



ALUMINUM, EURO STYLE

45 332 AL

G298-OL #6 Switch Manual Left, AL, Euro Style
G298-OR #6 Switch Manual Right, AL, Euro Style
G298-8L 8 ft. Switch Manual Left, AL, Euro Style
G298-8R 8 ft. Switch Manual Right, AL, Euro Style

PARTS & ACCESSORIES



CPL-129T.2

Coupler, 1:29 Truck Mounted (Pair)



CPL-129B.2

Coupler, 1:29 Body Mounted (Pair)



CPL-129L.2

Coupler, 1:29 Body Mounted Link & Loop (Pair)



WL-129.1

Wheel, Fits AML Freight Cars (1Axle)



WL-129.4

Wheels, Fit AML Freight Cars (4 Axles)



WL-129B.1

Wheel, Ball Bearing, Fits AML Freight Cars (1 Axle)



WL-129B.4

Wheels, Ball Bearing, Fit AML Freight Cars (4 Axles)



TRK-9BT.2

Bettendorf Trucks, Fit AML Freight Cars (Pair)



TRK-9RB.2

Modern Roller Bearing Trucks, Fit AML Freight Cars (Pair)



TKRJ-3B.12

Rail Joiner, Code 332, Brass, 12pcs



TKRJ-3S.12

Rail Joiner, Code 332, Stainless Steel, 12pcs



TKRC-3B.1

Universal Rail Clamp, Split on One Side, Brass, 1pc



TKRC-3B.10

Universal Rail Clamp, Split on One Side, Brass, 10pcs



TKRC-3B.100

Universal Rail Clamp, Split on One Side, Brass, 100pcs



TKRC-39.1

Power Rail Clamp, Brass, 1pc



TKTieN3.48

1ft. Narrow Gauge Ties, Code 332, 48pcs/Box



TKTieS3.48

1ft. Standard Gauge Ties, Code 332, 48pcs/Box



T-Roller

Treadmill Roller, 1pc

AML CUSTOM RUNS

CONTACT US TO ENQUIRE ABOUT ACCUCRAFT TRAINS CUSTOM RUN PROGRAM FOR OUR PLASTIC MODELS. YOUR DREAM ROADNAME, REAL OR FREELANCE, CAN BE MADE INTO A REALITY FOR ANY OF OUR EXISTING PLASTIC PROJECTS.

TERMS:

100 CAR MINIMUM. UP TO 2 ARTWORKS PER 100 CARS AND 4 CAR NUMBERS PER ARTWORK.

ARTWORK CAN BE SUPPLIED OR DONE BY US FOR A \$200 DESIGN FEE EACH.

\$200 TOOLING SET UP FEE PER ARTWORK.

